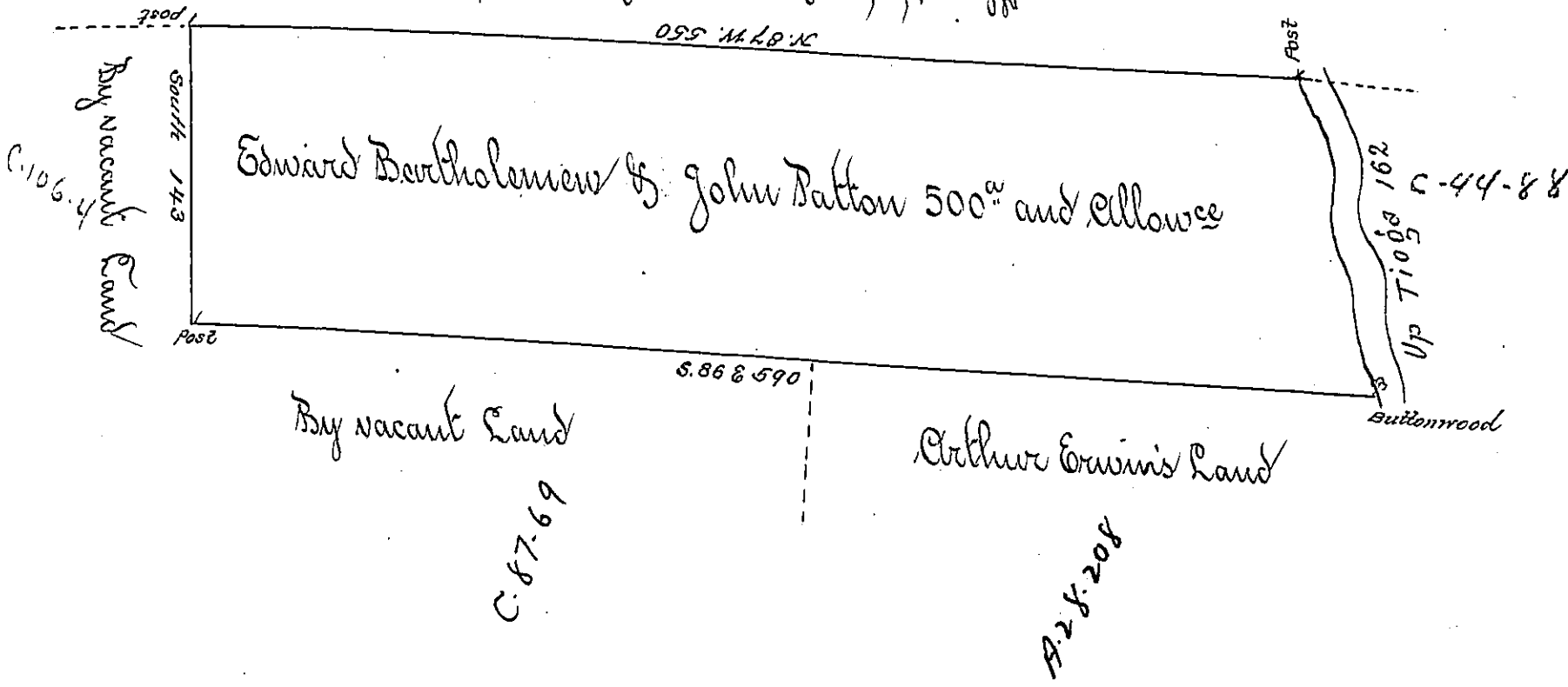


Courses and Distances up Tides

N 15 W 80  
N 9 W 62  
N 27 W 20

162

the State of New York



The Draught of a Tract of Land called \_\_\_\_\_ situate on the West Side of Tioga at the first crossings adjoining the Line of the State of New York, in the County of Luzerne containing five hundred acres with usual Allowance for Roads, Surveyed the third day of October Anno Dom. 1786 In Pursuance of a Warrant to Edward Bartholomew and John Patton dated at Philad<sup>a</sup> the seventeenth day of May Anno Dom. 1786.

1785

To John Lukens Esq. }  
S. C. of Pennsylvania }

J. M. Hoaday  
D. S.

# May 1785

IN TESTIMONY that the above is a copy of the original remaining on file in the Department of Internal Affairs of Pennsylvania, made conformably to an Act of Assembly approved the 16th day of February, 1833, I have hereunto set my Hand and caused the Seal of said Department to be affixed at Harrisburg, this ninth day of November 1903.

*James P. Brown*  
Secretary of Internal Affairs.